



## Why GoRPM?

GoRPM is a comprehensive strategic planning solution used to aggregate and analyze all types of real and personal property, as well as facilities data.

### ➤ Real & Personal Property

#### Flexible and Readily Scalable Solution

- Easily leverage systems and any number of data sets, including geospatial information through integration
- Accurately manage real and personal property information precisely as you choose, according to your unique organizational hierarchy, data sets, attributes and desired level of granularity
- Efficiently transform your data by applying analysis and modeling to quickly acquire the business intelligence you need to improve portfolio management



### ➤ Space Management

#### Maximize Return on Investment

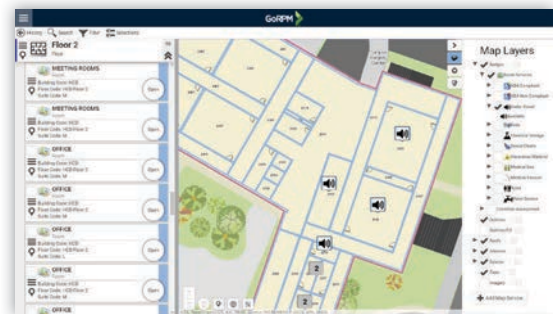
- Apply industry standards to consistently classify space and accurately account for gross and net room areas
- Quickly analyze space assignments and requirements
- Rapidly identify occupancy status and vacancies in a floor, building or across the portfolio
- Easily access information to manage leases and prorate expenses for cost recovery
- Automatically generate reports, which can include floor plans depicting space assignments or classifications



### ➤ Operations and Maintenance

#### Comprehensive Solution for Improved Performance

- Seamlessly leverage data from CMMS and other platforms via GoRPM's web services integration or through import
- Efficiently collect and improve the accuracy of equipment inventories using mobile devices
- Readily store and access vital construction and operational documentation
- Automatically combine information from multiple sources to produce key metrics and analyze performance



### ➤ Assessments

#### Business Intelligence for Improved Planning

- Readily access condition of systems and components
- Use proven methodologies to quantify deferred maintenance and capital renewal costs
- Automatically organize and roll up costs using ASTM UNIFORMAT II elemental classifications
- Quickly compare facility condition indices





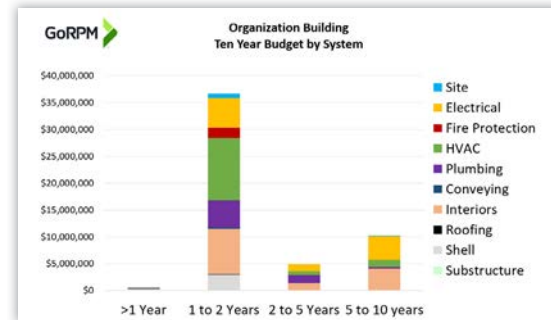
## Why GoRPM?

GoRPM is a comprehensive strategic planning solution used to aggregate and analyze all types of real and personal property, as well as facilities data.

### Capital Planning

#### Wisely Plan Capital Investments

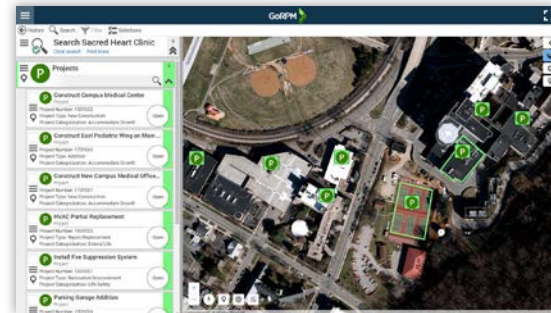
- Forecast capital investments using industry leading RSMeans® cost data
- Automatically prioritize needs
- Quickly produce multi-year budgets using automated reports



### Project Management

#### Efficiently Plan and Track Projects

- Readily categorize and prioritize projects according to your business rules
- Easily track status, milestone dates and other key data
- Accurately account for project costs
- Quickly visualize project status in maps and floor plans with color-coded icons (GoRPM Badges)



### Risk Management

#### Consolidate, Manage and Mitigate Risks

- Easily identify locations and manage data for hazardous materials, fire barriers, underground storage tanks and more
- Reduce the risk of unintentionally disturbing hazardous materials or compromising the integrity of fire barriers by sharing locations with O&M staff and contractors
- Quickly locate utility cut-offs, areas of rescue, evacuation gathering locations and other key information for emergencies
- Broadly share information across the organization and with external regulatory and emergency management stakeholders, while controlling access to sensitive information using GoRPM's roles and permissions



### Sustainability

#### Minimize Energy Use, Costs and Carbon Emissions

- Easily enter or import utility bills
- Automatically normalize and aggregate energy data
- Promptly identify potential cost saving opportunities by analyzing historic trends and by comparing use and cost intensities
- Instantly produce energy information with push-button automated reports and dashboards
- Seamlessly exchange data and metrics with ENERGY STAR® Portfolio Manager® via GoRPM web services integration

